

See discussions, stats, and author profiles for this publication at: <https://www.researchgate.net/publication/51141793>

2-Dibutylamino-1-(2,7-dichloro-9H-fluoren-4-yl)ethanol

Article in Acta Crystallographica Section E Structure Reports Online · October 2010

DOI: 10.1107/S1600536810037566 · Source: PubMed

CITATIONS

2

READS

210

5 authors, including:



Vijesh A M

PAYYANUR COLLEGE, PAYYANUR, KANNUR, KERALA, INDIA

85 PUBLICATIONS 724 CITATIONS

[SEE PROFILE](#)



Arun M Isloor

National Institute of Technology Karnataka

548 PUBLICATIONS 4,118 CITATIONS

[SEE PROFILE](#)

Some of the authors of this publication are also working on these related projects:



Medicinal organic chemistry [View project](#)



Hydrogels for tissue engineering [View project](#)

2-Dibutylamino-1-(2,7-dichloro-9H-fluoren-4-yl)ethanol

Hoong-Kun Fun,^{a,*} Chin Sing Yeap,^{a,§} A. M. Vijesh,^b Arun M Isloor^c and P. K. Vasudeva^b

^aX-ray Crystallography Unit, School of Physics, Universiti Sains Malaysia, 11800 USM, Penang, Malaysia, ^bSeQuent Scientific Ltd, No. 120 A & B, Industrial Area, Baikampady, New Mangalore, Karnataka, 575 011, India, and ^cOrganic Chemistry Division, Department of Chemistry, National Institute of Technology-Karnataka, Surathkal, Mangalore 575 025, India
Correspondence e-mail: hkfun@usm.my

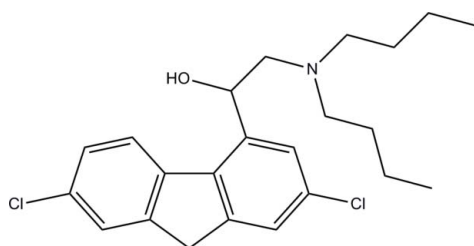
Received 30 August 2010; accepted 20 September 2010

Key indicators: single-crystal X-ray study; $T = 100$ K; mean $\sigma(\text{C}-\text{C}) = 0.002$ Å; R factor = 0.035; wR factor = 0.135; data-to-parameter ratio = 24.2.

In the title compound, $\text{C}_{23}\text{H}_{29}\text{Cl}_2\text{NO}$, the fluorene ring is essentially planar, with a maximum deviation from the mean plane of 0.041 (1) Å. The amine group adopts a pyramidal configuration, the sum of the bond angles being 336.2 (3)°. In the crystal, the molecules are linked into dimers by intermolecular $\text{O}-\text{H}\cdots\text{N}$ and $\text{C}-\text{H}\cdots\text{O}$ hydrogen bonds. Weak $\text{C}-\text{H}\cdots\pi$ and $\pi-\pi$ [centroid-centroid distance = 3.7544 (7) Å] interactions are also observed.

Related literature

For general background and applications of fluorene derivatives, see: Reinhardt *et al.* (1998); Yao & Belfield (2005); Werts *et al.* (2004); Belfield *et al.* (2009); Sun *et al.* (2009); Park *et al.* (2009); Kotaka *et al.* (2010); Wong *et al.* (2005); Beulter *et al.* (2007). For the stability of the temperature controller used in the data collection, see: Cosier & Glazer (1986).



Experimental

Crystal data

$\text{C}_{23}\text{H}_{29}\text{Cl}_2\text{NO}$

$M_r = 406.37$

Triclinic, $P\bar{1}$
 $a = 10.0009$ (4) Å
 $b = 10.8847$ (4) Å
 $c = 11.0853$ (4) Å
 $\alpha = 68.161$ (1)°
 $\beta = 70.999$ (1)°
 $\gamma = 88.904$ (1)°

$V = 1051.90$ (7) Å³
 $Z = 2$
Mo $K\alpha$ radiation
 $\mu = 0.32$ mm⁻¹
 $T = 100$ K
 $0.34 \times 0.28 \times 0.20$ mm

Data collection

Bruker APEXII DUO CCD area-detector diffractometer
Absorption correction: multi-scan (SADABS; Bruker, 2009)
 $T_{\min} = 0.900$, $T_{\max} = 0.937$

19180 measured reflections
6052 independent reflections
5448 reflections with $I > 2\sigma(I)$
 $R_{\text{int}} = 0.025$

Refinement

$R[F^2 > 2\sigma(F^2)] = 0.035$
 $wR(F^2) = 0.135$
 $S = 1.15$
6052 reflections
250 parameters

H atoms treated by a mixture of independent and constrained refinement
 $\Delta\rho_{\text{max}} = 0.65$ e Å⁻³
 $\Delta\rho_{\text{min}} = -0.39$ e Å⁻³

Table 1

Hydrogen-bond geometry (Å, °).

Cg2 and Cg3 are the centroids of the C2–C7 and C1/C9–C13 benzene rings, respectively.

$D-\text{H}\cdots A$	$D-\text{H}$	$\text{H}\cdots A$	$D\cdots A$	$D-\text{H}\cdots A$
$\text{O1}-\text{H1O1}\cdots\text{N1}^{\text{i}}$	0.89 (2)	1.99 (2)	2.8762 (13)	175 (2)
$\text{C14}-\text{H14A}\cdots\text{O1}^{\text{i}}$	0.98	2.57	3.1831 (15)	121
$\text{C8}-\text{H8A}\cdots\text{Cg2}^{\text{ii}}$	0.97	2.98	3.6293 (13)	126
$\text{C22}-\text{H22A}\cdots\text{Cg2}^{\text{iii}}$	0.97	2.82	3.6730 (15)	148
$\text{C23}-\text{H23B}\cdots\text{Cg3}^{\text{i}}$	0.96	2.92	3.7920 (18)	152

Symmetry codes: (i) $-x + 1, -y, -z + 2$; (ii) $-x + 1, -y + 1, -z + 1$; (iii) $x, y - 1, z$.

Data collection: APEX2 (Bruker, 2009); cell refinement: SAINT (Bruker, 2009); data reduction: SAINT; program(s) used to solve structure: SHELXTL (Sheldrick, 2008); program(s) used to refine structure: SHELXTL; molecular graphics: SHELXTL; software used to prepare material for publication: SHELXTL and PLATON (Spek, 2009).

HKF and CSY thank Universiti Sains Malaysia (USM) for the Research University Grant No. 1001/PFIZIK/811160. CSY also thanks USM for the award of a USM Fellowship. AMV is thankful to the management of SeQuent Scientific Ltd, New Mangalore, India, for their invaluable support and allocation of resources for this work. AMI thankful to the Head of the Department of Chemistry and the Director of the National Institute of Technology-Karnataka, Surathkal, India, for providing research facilities.

Supplementary data and figures for this paper are available from the IUCr electronic archives (Reference: FJ2335).

References

- Belfield, K. D., Bondar, M. V., Yanez, C. O., Herandez, F. E. & Przhonska, O. V. (2009). *J. Mater. Chem.* **19**, 7498–7502.
Beulter, U., Fuenschilling, C. & Steinkemper, A. (2007). *Org. Process Res. Dev.* **11**, 341–345.
Bruker (2009). APEX2, SAINT and SADABS. Bruker AXS Inc., Madison, Wisconsin, USA.
Cosier, J. & Glazer, A. M. (1986). *J. Appl. Cryst.* **19**, 105–107.

- Kotaka, H., Konishi, G. & Mizuno, K. (2010). *Tetrahedron Lett.* **51**, 181–184.
- Park, K. K., Park, J. W. & Hamilton, A. D. (2009). *Org. Biomol. Chem.* **7**, 4225–4232.
- Reinhardt, B. A., Brott, L. L., Clarkson, S. J., Dillard, A. G., Bhatt, J. C., Kannan, R., Yuan, L., He, G. S. & Prasad, P. N. (1998). *Chem. Mater.* **10**, 1863–1874.
- Sheldrick, G. M. (2008). *Acta Cryst.* **A64**, 112–122.
- Spek, A. L. (2009). *Acta Cryst.* **D65**, 148–155.
- Sun, M., Ding, Y., Zhao, L. & Ma, F. (2009). *Chem. Phys.* **359**, 166–172.
- Werts, M. H. V., Gmouh, S., Mongin, O., Pons, T. & Blanchard-Desce, M. (2004). *J. Am. Chem. Soc.* **126**, 16294–16295.
- Wong, K., Chen, Y., Lin, Y., Su, H. & Wu, C. (2005). *Org. Lett.* **7**, 5361–5364.
- Yao, S. & Belfield, K. D. (2005). *J. Org. Chem.* **70**, 5126–5132.

supplementary materials

Acta Cryst. (2010). E66, o2624–o2625 [doi:10.1107/S1600536810037566]

2-Dibutylamino-1-(2,7-dichloro-9*H*-fluoren-4-yl)ethanol

H.-K. Fun, C. S. Yeap, A. M. Vijesh, A. M. Isloor and P. K. Vasudeva

Comment

The fluorene ring is a π -conjugated system that enables facile synthetic manipulation. The synthesis and characterization of fluorene derivatives have attracted much attention in recent years because of their interesting properties and potential applications in various fields, such as two-photon absorption dyes, fluorescent probes, and light-emitting materials (Reinhardt *et al.*, 1998; Yao & Belfield, 2005; Werts *et al.*, 2004; Belfield *et al.*, 2009; Sun *et al.*, 2009; Park *et al.*, 2009; Kotaka *et al.*, 2010; Wong *et al.*, 2005). Fluorene derivatives also possess biological activities like antimalarial property (Beulter *et al.*, 2007). These diverse applications of fluorene derivatives led us to explore the crystal structure of the title compound.

In the title compound (Fig. 1), the fluorene ring is essentially coplanar with maximum deviation of 0.041 (1) Å at atom C5. The amine group adopts a pyramidal configuration. In the crystal structure, the molecules are linked into dimers (Fig. 2) by intermolecular O1—H1O1 \cdots N1 and C14—H14A \cdots O1 hydrogen bonds (Table 1). Weak C—H \cdots π and $\pi\cdots\pi$ interactions are observed. $Cg1\cdots Cg3^{ii}$ of 3.7544 (7) Å. $Cg1$ is centroid of benzene ring C1–C2/C7–C9.

Experimental

The title compound was recrystallized from acetone. *M.p.* 352–354 K. The sample was a gift from SeQuent Scientific Ltd., No: 120 A & B, Industrial Area, Baikampady, New Mangalore, Karnataka, 575 011, India.

Refinement

The O-bound hydrogen atom was located from difference Fourier map and refined freely. The rest of the hydrogen atoms were positioned geometrically and refined using a riding model. A rotating-group model was applied for the methyl groups.

Figures

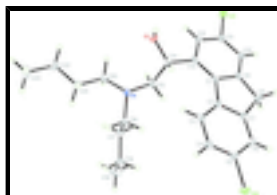


Fig. 1. The title compound with atom labels and 50% probability displacement ellipsoids for non-H atoms.

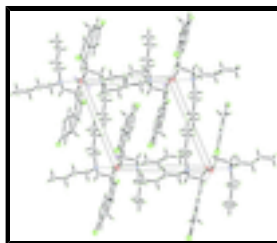


Fig. 2. The crystal packing of title compound, viewed down the *a* axis showing the molecules link into dimers.

2-Dibutylamino-1-(2,7-dichloro-9H-fluoren-4-yl)ethanol

Crystal data

$C_{23}H_{29}Cl_2NO$	$Z = 2$
$M_r = 406.37$	$F(000) = 432$
Triclinic, PT	$D_x = 1.283 \text{ Mg m}^{-3}$
Hall symbol: $-P 1$	Mo $K\alpha$ radiation, $\lambda = 0.71073 \text{ \AA}$
$a = 10.0009 (4) \text{ \AA}$	Cell parameters from 9903 reflections
$b = 10.8847 (4) \text{ \AA}$	$\theta = 2.8\text{--}35.1^\circ$
$c = 11.0853 (4) \text{ \AA}$	$\mu = 0.32 \text{ mm}^{-1}$
$\alpha = 68.161 (1)^\circ$	$T = 100 \text{ K}$
$\beta = 70.999 (1)^\circ$	Block, colourless
$\gamma = 88.904 (1)^\circ$	$0.34 \times 0.28 \times 0.20 \text{ mm}$
$V = 1051.90 (7) \text{ \AA}^3$	

Data collection

Bruker APEXII DUO CCD area-detector diffractometer	6052 independent reflections
Radiation source: fine-focus sealed tube graphite	5448 reflections with $I > 2\sigma(I)$
φ and ω scans	$R_{\text{int}} = 0.025$
Absorption correction: multi-scan (<i>SADABS</i> ; Bruker, 2009)	$\theta_{\text{max}} = 30.0^\circ$, $\theta_{\text{min}} = 2.0^\circ$
$T_{\text{min}} = 0.900$, $T_{\text{max}} = 0.937$	$h = -14 \rightarrow 14$
19180 measured reflections	$k = -13 \rightarrow 15$
	$l = -15 \rightarrow 15$

Refinement

Refinement on F^2	Primary atom site location: structure-invariant direct methods
Least-squares matrix: full	Secondary atom site location: difference Fourier map
$R[F^2 > 2\sigma(F^2)] = 0.035$	Hydrogen site location: inferred from neighbouring sites
$wR(F^2) = 0.135$	H atoms treated by a mixture of independent and constrained refinement
$S = 1.15$	$w = 1/[\sigma^2(F_o^2) + (0.0878P)^2 + 0.1785P]$
6052 reflections	where $P = (F_o^2 + 2F_c^2)/3$
250 parameters	$(\Delta/\sigma)_{\text{max}} = 0.001$
0 restraints	$\Delta\rho_{\text{max}} = 0.65 \text{ e \AA}^{-3}$
	$\Delta\rho_{\text{min}} = -0.39 \text{ e \AA}^{-3}$

Special details

Experimental. The crystal was placed in the cold stream of an Oxford Cryosystems Cobra open-flow nitrogen cryostat (Cosier & Glazer, 1986) operating at 100.0 (1) K.

Geometry. All e.s.d.'s (except the e.s.d. in the dihedral angle between two l.s. planes) are estimated using the full covariance matrix. The cell e.s.d.'s are taken into account individually in the estimation of e.s.d.'s in distances, angles and torsion angles; correlations between e.s.d.'s in cell parameters are only used when they are defined by crystal symmetry. An approximate (isotropic) treatment of cell e.s.d.'s is used for estimating e.s.d.'s involving l.s. planes.

Refinement. Refinement of F^2 against ALL reflections. The weighted R -factor wR and goodness of fit S are based on F^2 , conventional R -factors R are based on F , with F set to zero for negative F^2 . The threshold expression of $F^2 > \sigma(F^2)$ is used only for calculating R -factors(gt) etc. and is not relevant to the choice of reflections for refinement. R -factors based on F^2 are statistically about twice as large as those based on F , and R -factors based on ALL data will be even larger.

Fractional atomic coordinates and isotropic or equivalent isotropic displacement parameters (\AA^2)

	<i>x</i>	<i>y</i>	<i>z</i>	$U_{\text{iso}}^*/U_{\text{eq}}$
C11	−0.09361 (3)	0.21897 (3)	0.88976 (3)	0.02143 (10)
C12	0.91082 (3)	0.72785 (3)	0.47680 (3)	0.02310 (10)
O1	0.34512 (9)	−0.00277 (8)	0.98844 (9)	0.01700 (17)
N1	0.61607 (10)	0.00676 (9)	0.76424 (10)	0.01474 (18)
C1	0.37158 (11)	0.35655 (11)	0.76122 (11)	0.01307 (19)
C2	0.51590 (11)	0.42961 (11)	0.70234 (11)	0.0137 (2)
C3	0.64840 (12)	0.38878 (11)	0.70641 (12)	0.0157 (2)
H3A	0.6557	0.3002	0.7557	0.019*
C4	0.76946 (12)	0.48193 (12)	0.63599 (12)	0.0174 (2)
H4A	0.8580	0.4555	0.6380	0.021*
C5	0.75782 (12)	0.61409 (12)	0.56297 (12)	0.0170 (2)
C6	0.62725 (12)	0.65831 (11)	0.55809 (11)	0.0168 (2)
H6A	0.6208	0.7472	0.5093	0.020*
C7	0.50725 (12)	0.56512 (11)	0.62855 (11)	0.0147 (2)
C8	0.35494 (12)	0.58751 (11)	0.64065 (12)	0.0166 (2)
H8A	0.3211	0.6472	0.6879	0.020*
H8B	0.3446	0.6239	0.5503	0.020*
C9	0.27675 (11)	0.44936 (11)	0.72460 (11)	0.0143 (2)
C10	0.13297 (12)	0.41040 (12)	0.76341 (11)	0.0161 (2)
H10A	0.0709	0.4719	0.7390	0.019*
C11	0.08464 (11)	0.27561 (12)	0.84032 (12)	0.0160 (2)
C12	0.17583 (11)	0.18198 (11)	0.87841 (11)	0.0154 (2)
H12A	0.1399	0.0928	0.9301	0.019*
C13	0.32054 (11)	0.22131 (11)	0.83943 (11)	0.01356 (19)
C14	0.41897 (11)	0.11665 (11)	0.87700 (11)	0.0141 (2)
H14A	0.4898	0.1530	0.9023	0.017*
C15	0.49599 (12)	0.08479 (11)	0.74948 (12)	0.0154 (2)
H15A	0.4284	0.0352	0.7336	0.018*
H15B	0.5313	0.1676	0.6691	0.018*
C16	0.74550 (12)	0.06358 (12)	0.63995 (12)	0.0162 (2)
H16A	0.8249	0.0192	0.6611	0.019*
H16B	0.7652	0.1569	0.6218	0.019*
C17	0.74054 (12)	0.05380 (12)	0.50737 (12)	0.0188 (2)
H17A	0.7301	−0.0393	0.5209	0.023*
H17B	0.6582	0.0929	0.4878	0.023*

supplementary materials

C18	0.87478 (13)	0.12510 (13)	0.38423 (12)	0.0220 (2)
H18A	0.8838	0.2184	0.3702	0.026*
H18B	0.9570	0.0873	0.4053	0.026*
C19	0.87480 (18)	0.11485 (18)	0.25151 (15)	0.0351 (3)
H19A	0.9637	0.1568	0.1791	0.053*
H19B	0.7982	0.1585	0.2259	0.053*
H19C	0.8625	0.0227	0.2655	0.053*
C20	0.57620 (12)	-0.13645 (11)	0.80309 (12)	0.0167 (2)
H20A	0.5521	-0.1476	0.7295	0.020*
H20B	0.4922	-0.1680	0.8859	0.020*
C21	0.69500 (13)	-0.22106 (12)	0.82942 (12)	0.0184 (2)
H21A	0.7679	-0.2082	0.7415	0.022*
H21B	0.7381	-0.1912	0.8820	0.022*
C22	0.64153 (15)	-0.36850 (13)	0.90795 (13)	0.0229 (2)
H22A	0.5982	-0.3982	0.8554	0.027*
H22B	0.5687	-0.3813	0.9959	0.027*
C23	0.7601 (2)	-0.45345 (16)	0.93422 (16)	0.0342 (3)
H23A	0.7230	-0.5460	0.9768	0.051*
H23B	0.7965	-0.4309	0.9944	0.051*
H23C	0.8353	-0.4369	0.8480	0.051*
H101	0.359 (2)	0.001 (2)	1.062 (2)	0.036 (5)*

Atomic displacement parameters (\AA^2)

	U^{11}	U^{22}	U^{33}	U^{12}	U^{13}	U^{23}
C11	0.01152 (14)	0.02463 (17)	0.02342 (16)	0.00024 (10)	-0.00496 (11)	-0.00501 (12)
C12	0.01794 (15)	0.02340 (17)	0.02422 (16)	-0.00603 (11)	-0.00230 (11)	-0.00900 (12)
O1	0.0163 (4)	0.0142 (4)	0.0161 (4)	-0.0002 (3)	-0.0040 (3)	-0.0025 (3)
N1	0.0124 (4)	0.0129 (4)	0.0171 (4)	0.0023 (3)	-0.0027 (3)	-0.0058 (3)
C1	0.0123 (4)	0.0138 (5)	0.0132 (4)	0.0025 (3)	-0.0043 (4)	-0.0055 (4)
C2	0.0134 (5)	0.0145 (5)	0.0139 (4)	0.0019 (4)	-0.0047 (4)	-0.0063 (4)
C3	0.0145 (5)	0.0156 (5)	0.0176 (5)	0.0020 (4)	-0.0061 (4)	-0.0065 (4)
C4	0.0135 (5)	0.0205 (5)	0.0195 (5)	0.0011 (4)	-0.0053 (4)	-0.0095 (4)
C5	0.0152 (5)	0.0194 (5)	0.0157 (5)	-0.0027 (4)	-0.0029 (4)	-0.0078 (4)
C6	0.0184 (5)	0.0150 (5)	0.0161 (5)	0.0000 (4)	-0.0056 (4)	-0.0052 (4)
C7	0.0156 (5)	0.0146 (5)	0.0141 (5)	0.0020 (4)	-0.0048 (4)	-0.0060 (4)
C8	0.0158 (5)	0.0141 (5)	0.0184 (5)	0.0031 (4)	-0.0061 (4)	-0.0045 (4)
C9	0.0139 (5)	0.0147 (5)	0.0145 (5)	0.0034 (4)	-0.0048 (4)	-0.0060 (4)
C10	0.0136 (5)	0.0177 (5)	0.0167 (5)	0.0050 (4)	-0.0057 (4)	-0.0061 (4)
C11	0.0115 (4)	0.0183 (5)	0.0166 (5)	0.0012 (4)	-0.0036 (4)	-0.0061 (4)
C12	0.0126 (5)	0.0153 (5)	0.0162 (5)	0.0016 (4)	-0.0038 (4)	-0.0048 (4)
C13	0.0125 (4)	0.0140 (5)	0.0135 (4)	0.0029 (4)	-0.0038 (4)	-0.0053 (4)
C14	0.0126 (4)	0.0118 (5)	0.0150 (5)	0.0014 (3)	-0.0033 (4)	-0.0034 (4)
C15	0.0138 (5)	0.0147 (5)	0.0173 (5)	0.0033 (4)	-0.0050 (4)	-0.0061 (4)
C16	0.0126 (5)	0.0163 (5)	0.0174 (5)	0.0007 (4)	-0.0021 (4)	-0.0066 (4)
C17	0.0180 (5)	0.0181 (5)	0.0176 (5)	0.0001 (4)	-0.0025 (4)	-0.0070 (4)
C18	0.0179 (5)	0.0252 (6)	0.0183 (5)	0.0014 (4)	-0.0027 (4)	-0.0064 (4)
C19	0.0343 (8)	0.0468 (9)	0.0195 (6)	-0.0015 (6)	-0.0029 (5)	-0.0130 (6)

C20	0.0168 (5)	0.0130 (5)	0.0183 (5)	0.0016 (4)	-0.0042 (4)	-0.0057 (4)
C21	0.0204 (5)	0.0158 (5)	0.0180 (5)	0.0054 (4)	-0.0047 (4)	-0.0073 (4)
C22	0.0339 (7)	0.0158 (5)	0.0187 (5)	0.0064 (5)	-0.0087 (5)	-0.0069 (4)
C23	0.0539 (9)	0.0255 (7)	0.0317 (7)	0.0212 (6)	-0.0222 (7)	-0.0146 (6)

Geometric parameters (Å, °)

C11—C11	1.7358 (11)	C13—C14	1.5202 (15)
C12—C5	1.7400 (12)	C14—C15	1.5354 (15)
O1—C14	1.4175 (13)	C14—H14A	0.9800
O1—H101	0.89 (2)	C15—H15A	0.9700
N1—C15	1.4751 (14)	C15—H15B	0.9700
N1—C20	1.4788 (14)	C16—C17	1.5290 (16)
N1—C16	1.4805 (14)	C16—H16A	0.9700
C1—C13	1.4037 (15)	C16—H16B	0.9700
C1—C9	1.4119 (14)	C17—C18	1.5252 (16)
C1—C2	1.4785 (15)	C17—H17A	0.9700
C2—C3	1.3989 (15)	C17—H17B	0.9700
C2—C7	1.4127 (15)	C18—C19	1.5162 (19)
C3—C4	1.3950 (16)	C18—H18A	0.9700
C3—H3A	0.9300	C18—H18B	0.9700
C4—C5	1.3881 (17)	C19—H19A	0.9600
C4—H4A	0.9300	C19—H19B	0.9600
C5—C6	1.3936 (16)	C19—H19C	0.9600
C6—C7	1.3878 (15)	C20—C21	1.5261 (16)
C6—H6A	0.9300	C20—H20A	0.9700
C7—C8	1.5082 (15)	C20—H20B	0.9700
C8—C9	1.5062 (16)	C21—C22	1.5197 (17)
C8—H8A	0.9700	C21—H21A	0.9700
C8—H8B	0.9700	C21—H21B	0.9700
C9—C10	1.3847 (15)	C22—C23	1.5259 (19)
C10—C11	1.3932 (16)	C22—H22A	0.9700
C10—H10A	0.9300	C22—H22B	0.9700
C11—C12	1.3941 (15)	C23—H23A	0.9600
C12—C13	1.3940 (15)	C23—H23B	0.9600
C12—H12A	0.9300	C23—H23C	0.9600
C14—O1—H101	105.1 (14)	N1—C15—H15A	109.0
C15—N1—C20	111.58 (9)	C14—C15—H15A	109.0
C15—N1—C16	111.49 (9)	N1—C15—H15B	109.0
C20—N1—C16	113.09 (9)	C14—C15—H15B	109.0
C13—C1—C9	119.98 (10)	H15A—C15—H15B	107.8
C13—C1—C2	132.12 (10)	N1—C16—C17	116.53 (9)
C9—C1—C2	107.90 (9)	N1—C16—H16A	108.2
C3—C2—C7	119.17 (10)	C17—C16—H16A	108.2
C3—C2—C1	132.54 (10)	N1—C16—H16B	108.2
C7—C2—C1	108.28 (9)	C17—C16—H16B	108.2
C4—C3—C2	119.50 (11)	H16A—C16—H16B	107.3
C4—C3—H3A	120.2	C18—C17—C16	111.72 (10)
C2—C3—H3A	120.2	C18—C17—H17A	109.3

supplementary materials

C5—C4—C3	119.99 (10)	C16—C17—H17A	109.3
C5—C4—H4A	120.0	C18—C17—H17B	109.3
C3—C4—H4A	120.0	C16—C17—H17B	109.3
C4—C5—C6	121.95 (10)	H17A—C17—H17B	107.9
C4—C5—C12	118.82 (9)	C19—C18—C17	113.12 (11)
C6—C5—C12	119.23 (9)	C19—C18—H18A	109.0
C7—C6—C5	117.74 (10)	C17—C18—H18A	109.0
C7—C6—H6A	121.1	C19—C18—H18B	109.0
C5—C6—H6A	121.1	C17—C18—H18B	109.0
C6—C7—C2	121.64 (10)	H18A—C18—H18B	107.8
C6—C7—C8	128.05 (10)	C18—C19—H19A	109.5
C2—C7—C8	110.31 (10)	C18—C19—H19B	109.5
C9—C8—C7	102.80 (9)	H19A—C19—H19B	109.5
C9—C8—H8A	111.2	C18—C19—H19C	109.5
C7—C8—H8A	111.2	H19A—C19—H19C	109.5
C9—C8—H8B	111.2	H19B—C19—H19C	109.5
C7—C8—H8B	111.2	N1—C20—C21	112.70 (9)
H8A—C8—H8B	109.1	N1—C20—H20A	109.1
C10—C9—C1	121.57 (10)	C21—C20—H20A	109.1
C10—C9—C8	127.77 (10)	N1—C20—H20B	109.1
C1—C9—C8	110.66 (9)	C21—C20—H20B	109.1
C9—C10—C11	117.54 (10)	H20A—C20—H20B	107.8
C9—C10—H10A	121.2	C22—C21—C20	112.38 (10)
C11—C10—H10A	121.2	C22—C21—H21A	109.1
C10—C11—C12	122.07 (10)	C20—C21—H21A	109.1
C10—C11—C11	120.11 (9)	C22—C21—H21B	109.1
C12—C11—C11	117.81 (9)	C20—C21—H21B	109.1
C13—C12—C11	120.35 (10)	H21A—C21—H21B	107.9
C13—C12—H12A	119.8	C21—C22—C23	112.52 (12)
C11—C12—H12A	119.8	C21—C22—H22A	109.1
C12—C13—C1	118.49 (10)	C23—C22—H22A	109.1
C12—C13—C14	119.41 (10)	C21—C22—H22B	109.1
C1—C13—C14	122.04 (9)	C23—C22—H22B	109.1
O1—C14—C13	112.68 (9)	H22A—C22—H22B	107.8
O1—C14—C15	108.89 (9)	C22—C23—H23A	109.5
C13—C14—C15	108.43 (9)	C22—C23—H23B	109.5
O1—C14—H14A	108.9	H23A—C23—H23B	109.5
C13—C14—H14A	108.9	C22—C23—H23C	109.5
C15—C14—H14A	108.9	H23A—C23—H23C	109.5
N1—C15—C14	112.91 (9)	H23B—C23—H23C	109.5
C13—C1—C2—C3	-0.9 (2)	C9—C10—C11—C12	0.31 (17)
C9—C1—C2—C3	179.75 (11)	C9—C10—C11—C11	-178.74 (8)
C13—C1—C2—C7	178.18 (11)	C10—C11—C12—C13	-0.25 (18)
C9—C1—C2—C7	-1.15 (12)	C11—C11—C12—C13	178.83 (9)
C7—C2—C3—C4	-0.98 (16)	C11—C12—C13—C1	-0.12 (17)
C1—C2—C3—C4	178.04 (11)	C11—C12—C13—C14	-177.47 (10)
C2—C3—C4—C5	0.21 (17)	C9—C1—C13—C12	0.40 (16)
C3—C4—C5—C6	0.51 (17)	C2—C1—C13—C12	-178.86 (11)
C3—C4—C5—C12	179.76 (9)	C9—C1—C13—C14	177.68 (10)

C4—C5—C6—C7	-0.40 (17)	C2—C1—C13—C14	-1.58 (18)
C12—C5—C6—C7	-179.66 (8)	C12—C13—C14—O1	-20.91 (14)
C5—C6—C7—C2	-0.40 (16)	C1—C13—C14—O1	161.83 (10)
C5—C6—C7—C8	179.25 (10)	C12—C13—C14—C15	99.69 (11)
C3—C2—C7—C6	1.10 (16)	C1—C13—C14—C15	-77.56 (13)
C1—C2—C7—C6	-178.14 (10)	C20—N1—C15—C14	99.92 (11)
C3—C2—C7—C8	-178.62 (10)	C16—N1—C15—C14	-132.56 (10)
C1—C2—C7—C8	2.15 (12)	O1—C14—C15—N1	-69.47 (11)
C6—C7—C8—C9	178.09 (11)	C13—C14—C15—N1	167.61 (9)
C2—C7—C8—C9	-2.22 (12)	C15—N1—C16—C17	-68.12 (12)
C13—C1—C9—C10	-0.34 (16)	C20—N1—C16—C17	58.58 (13)
C2—C1—C9—C10	179.08 (10)	N1—C16—C17—C18	175.50 (10)
C13—C1—C9—C8	-179.72 (10)	C16—C17—C18—C19	178.77 (12)
C2—C1—C9—C8	-0.29 (12)	C15—N1—C20—C21	-175.79 (9)
C7—C8—C9—C10	-177.83 (11)	C16—N1—C20—C21	57.56 (12)
C7—C8—C9—C1	1.49 (12)	N1—C20—C21—C22	163.47 (10)
C1—C9—C10—C11	-0.01 (17)	C20—C21—C22—C23	179.89 (11)
C8—C9—C10—C11	179.25 (11)		

Hydrogen-bond geometry (Å, °)

Cg2 and Cg3 are the centroids of the C2—C7 and C1/C9—C13 benzene rings, respectively.

<i>D</i> —H... <i>A</i>	<i>D</i> —H	H... <i>A</i>	<i>D</i> ... <i>A</i>	<i>D</i> —H... <i>A</i>
O1—H1O1...N1 ⁱ	0.89 (2)	1.99 (2)	2.8762 (13)	175 (2)
C14—H14A...O1 ⁱ	0.98	2.57	3.1831 (15)	121
C8—H8A...Cg2 ⁱⁱ	0.97	2.98	3.6293 (13)	126
C22—H22A...Cg2 ⁱⁱⁱ	0.97	2.82	3.6730 (15)	148
C23—H23B...Cg3 ⁱ	0.96	2.92	3.7920 (18)	152

Symmetry codes: (i) $-x+1, -y, -z+2$; (ii) $-x+1, -y+1, -z+1$; (iii) $x, y-1, z$.

Fig. 1

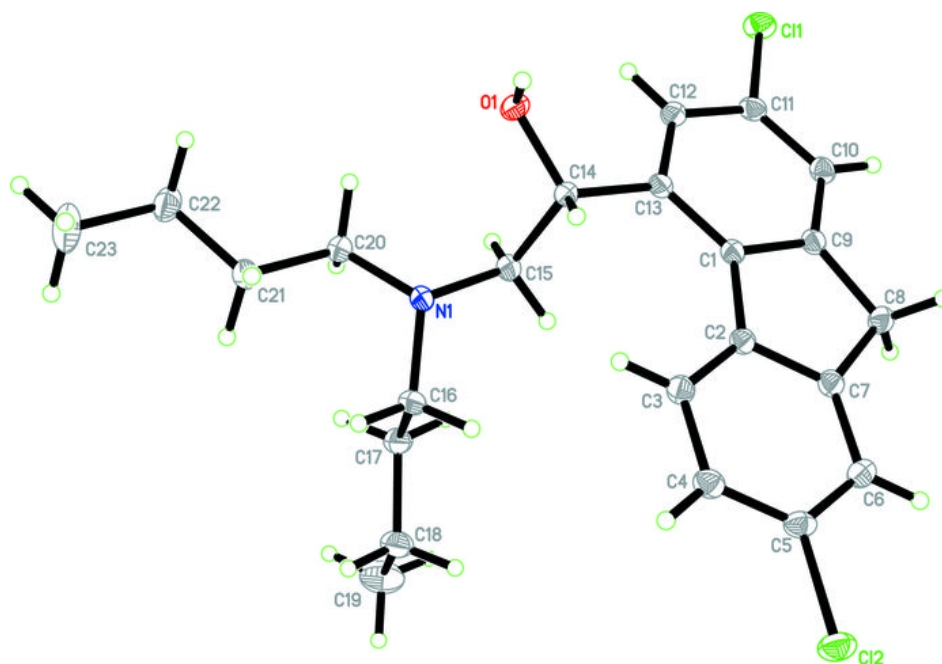


Fig. 2

